



**SEI**

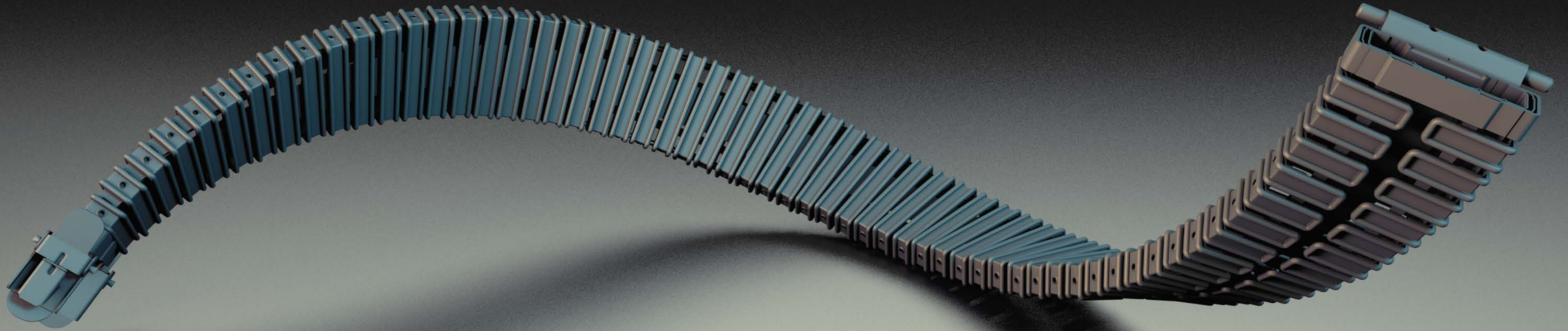


# PRODUCTS



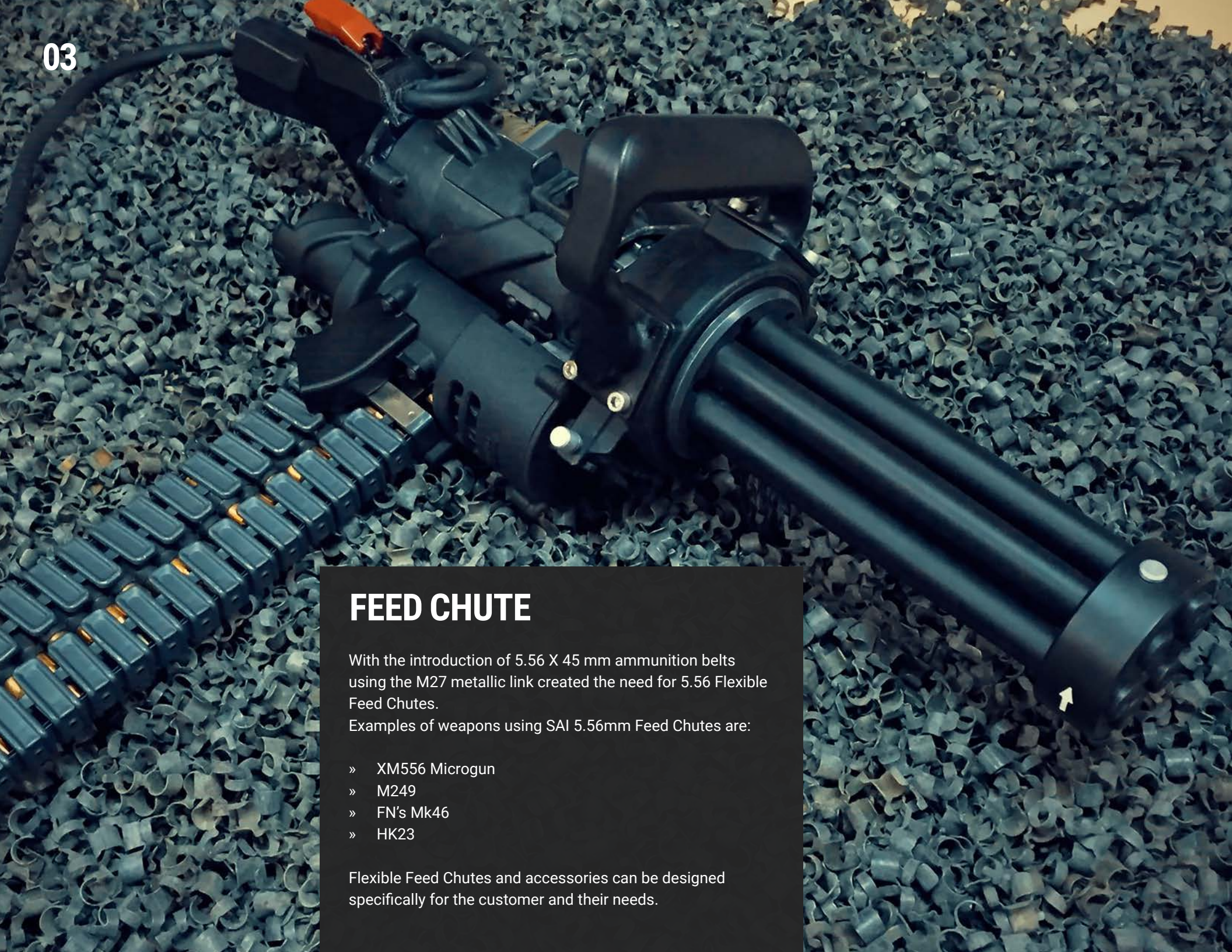
<b>5.56MM</b>	.....	<b>01</b>
<b>7.62MM</b>	.....	<b>05</b>
<b>50CAL</b>	.....	<b>09</b>
<b>20MM</b>	.....	<b>13</b>
<b>25MM</b>	.....	<b>17</b>
<b>30MM</b>	.....	<b>21</b>
<b>40MM</b>	.....	<b>25</b>
<b>7.62MM PLASTEX</b>	.....	<b>29</b>
<b>50CAL PLASTEX</b>	.....	<b>31</b>
<b>GUN ADAPTERS</b>	.....	<b>33</b>
<b>AMMO BOXES</b>	.....	<b>34</b>
<b>CHUTE OPTIONS</b>	.....	<b>35</b>





5.56MM





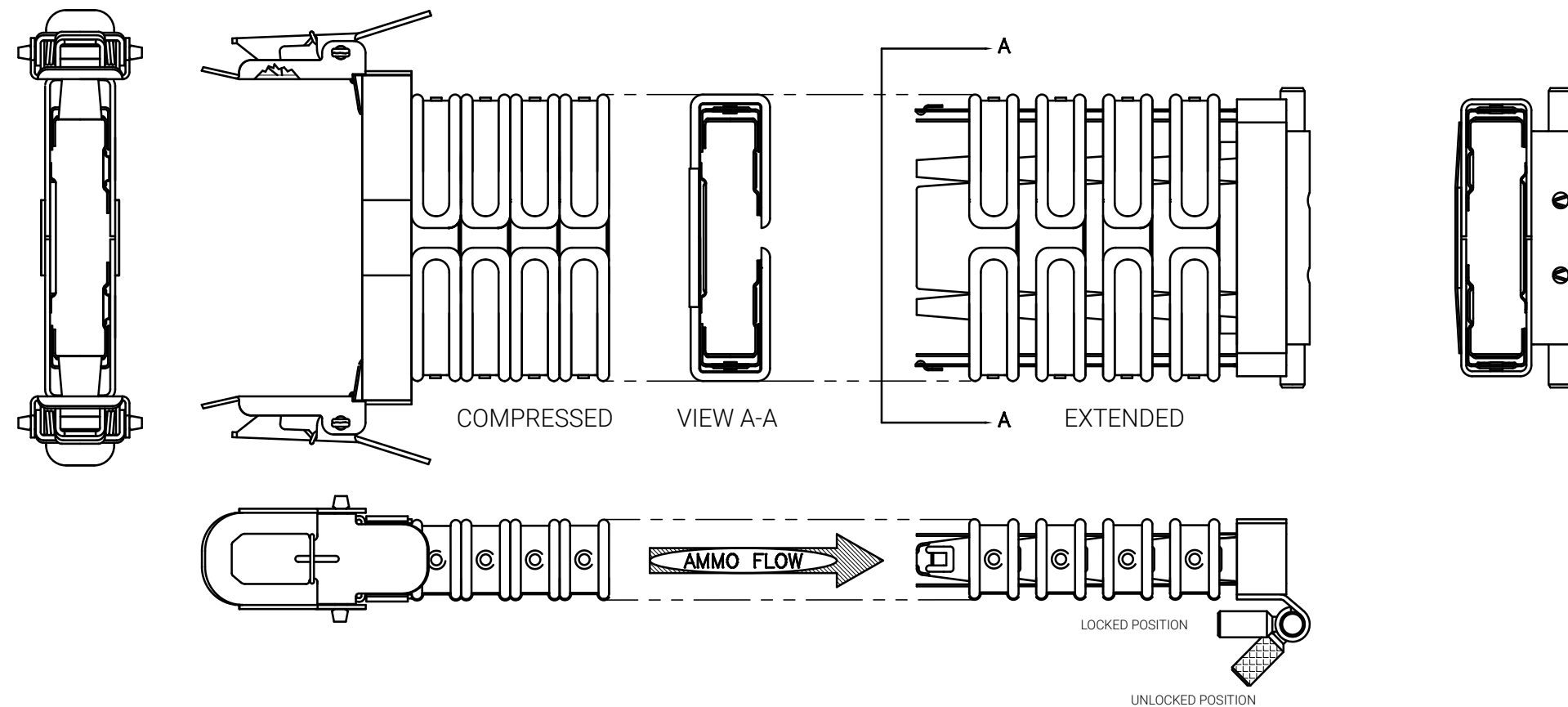
## FEED CHUTE

With the introduction of 5.56 X 45 mm ammunition belts using the M27 metallic link created the need for 5.56 Flexible Feed Chutes.

Examples of weapons using SAI 5.56mm Feed Chutes are:

- » XM556 Microgun
- » M249
- » FN's Mk46
- » HK23

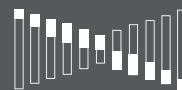
Flexible Feed Chutes and accessories can be designed specifically for the customer and their needs.



## 5.56MM FLEX FEED CHUTE



BEND SCALE: NONE



TWIST SCALE: NONE

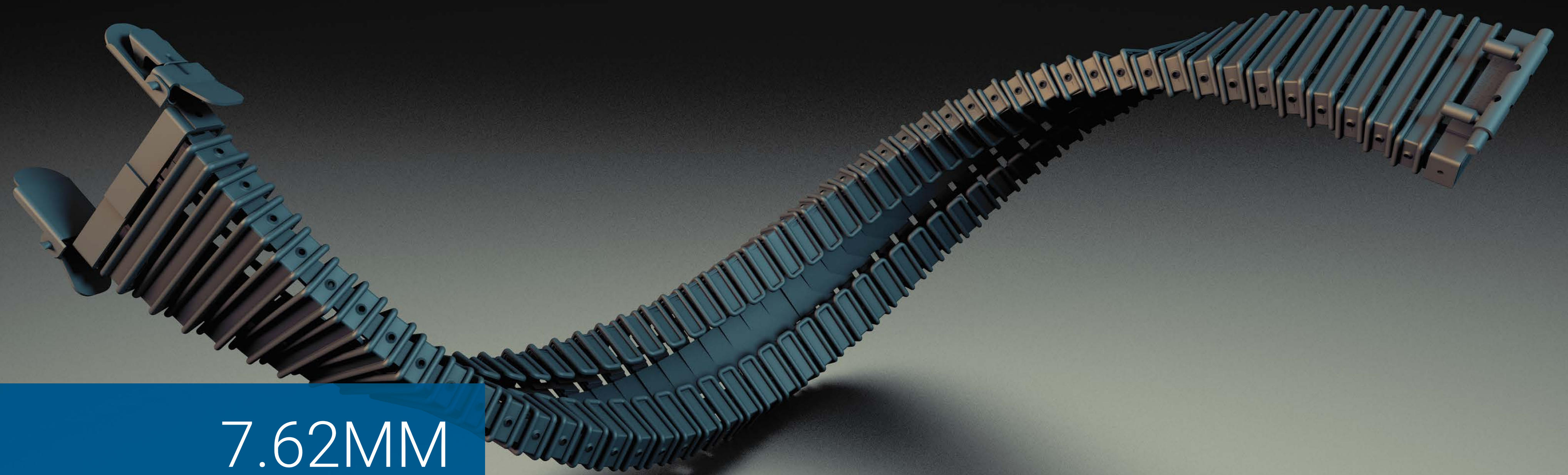


FAN SCALE: NONE

## SPECIFICATIONS

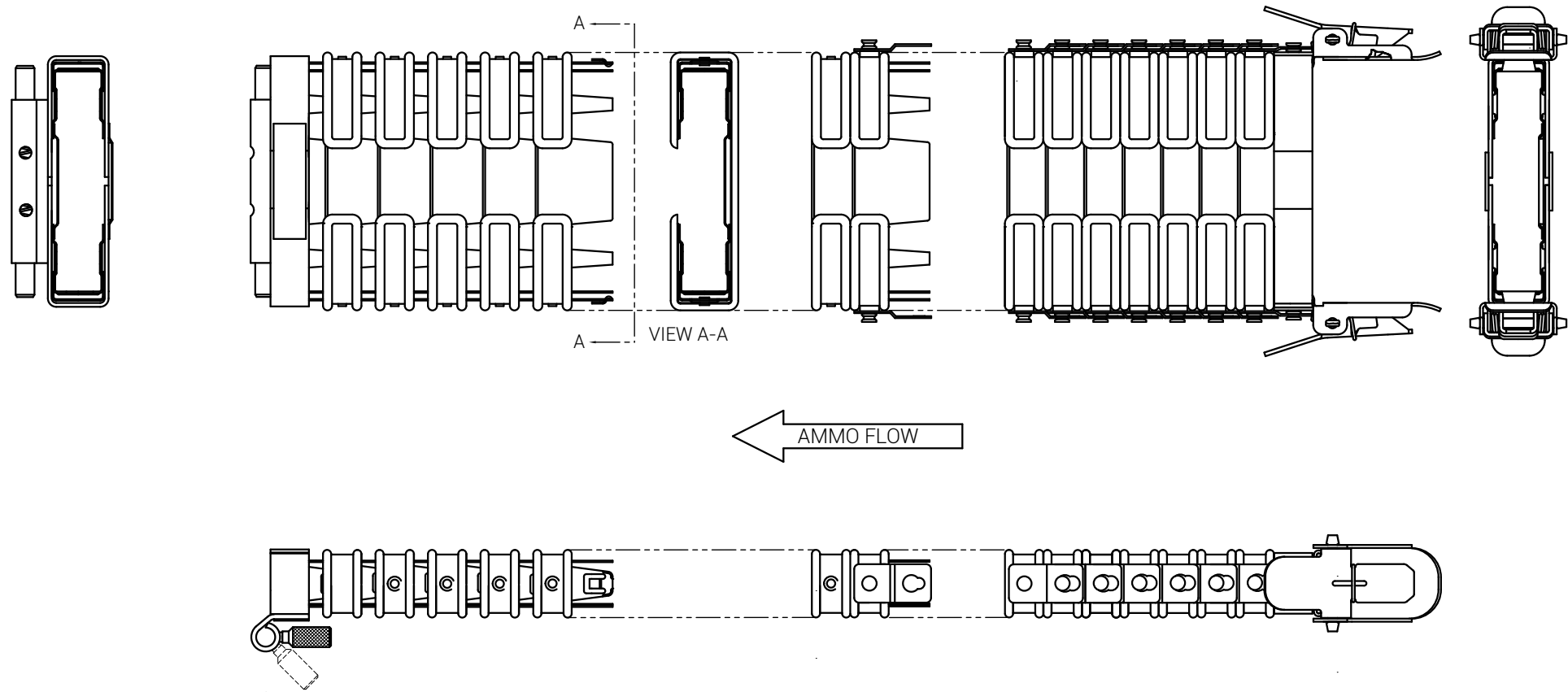
NUMBER OF LINKS	PER COMPRESSED FOOT ≈ 22
	PER EXTENDED FOOT ≈ 17
BEND RADIUS ± .25	1.5 OPEN-1.75 CLOSED
FAN RADIUS ± .25	BOTH ENDS 9.5 INCHES
TWIST ± .25	180° IN 24 INCHES





7.62MM





# 7.62MM FLEX FEED CHUTE



BEND  
SCALE: NONE



TWIST  
SCALE: NONE



FAN  
SCALE: NONE

## SPECIFICATIONS

NUMBER OF LINKS	PER COMPRESSED FOOT ≈ 22
	PER EXTENDED FOOT ≈ 17
BEND RADIUS ± .25	2.25 INCHES
FAN RADIUS ± .25	BOTH ENDS 9.5 INCHES
TWIST ± .25	180° IN 24 INCHES

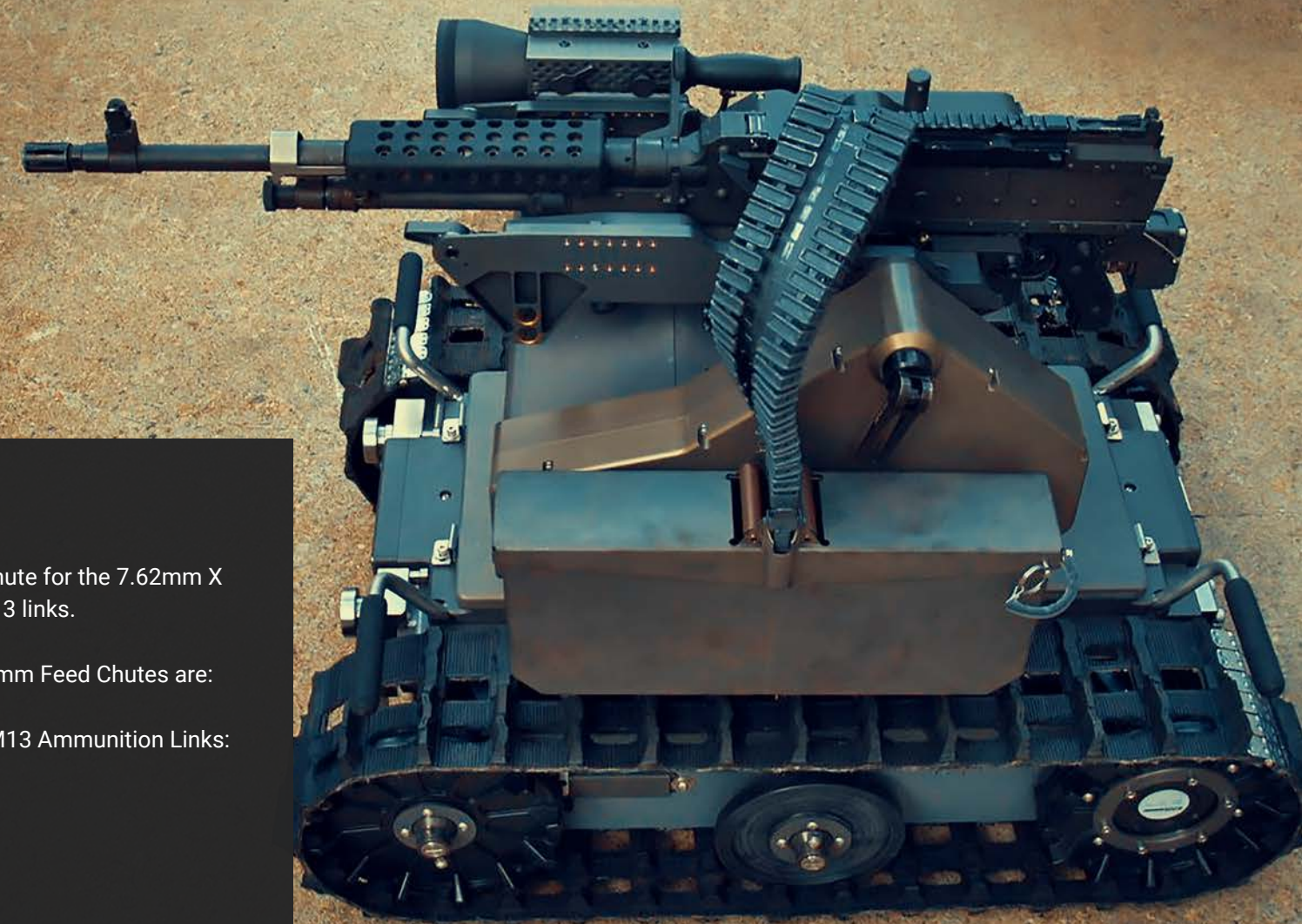
## FEED CHUTE

SAI completed its design for a feed chute for the 7.62mm X 51mm ammunition linked with the M13 links.

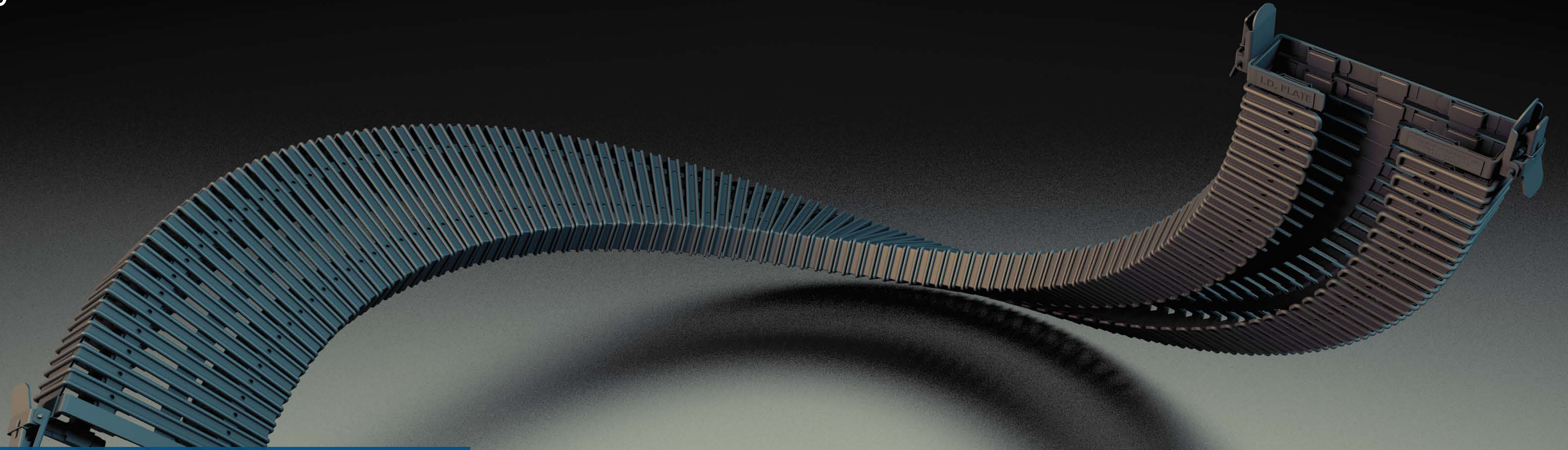
Examples of weapons using SAI 7.62mm Feed Chutes are:

- » 7.62 X 51 mm Ammunition with M13 Ammunition Links:
  - » M60
  - » MAG58
  - » M240
  - » FN's Mk48
  - » M134 Minigun
- » 7.62 X 54mm Ammunition with DM1 Links:
  - » MG1

Flexible Feed Chutes can be designed specifically for the customer and their needs.



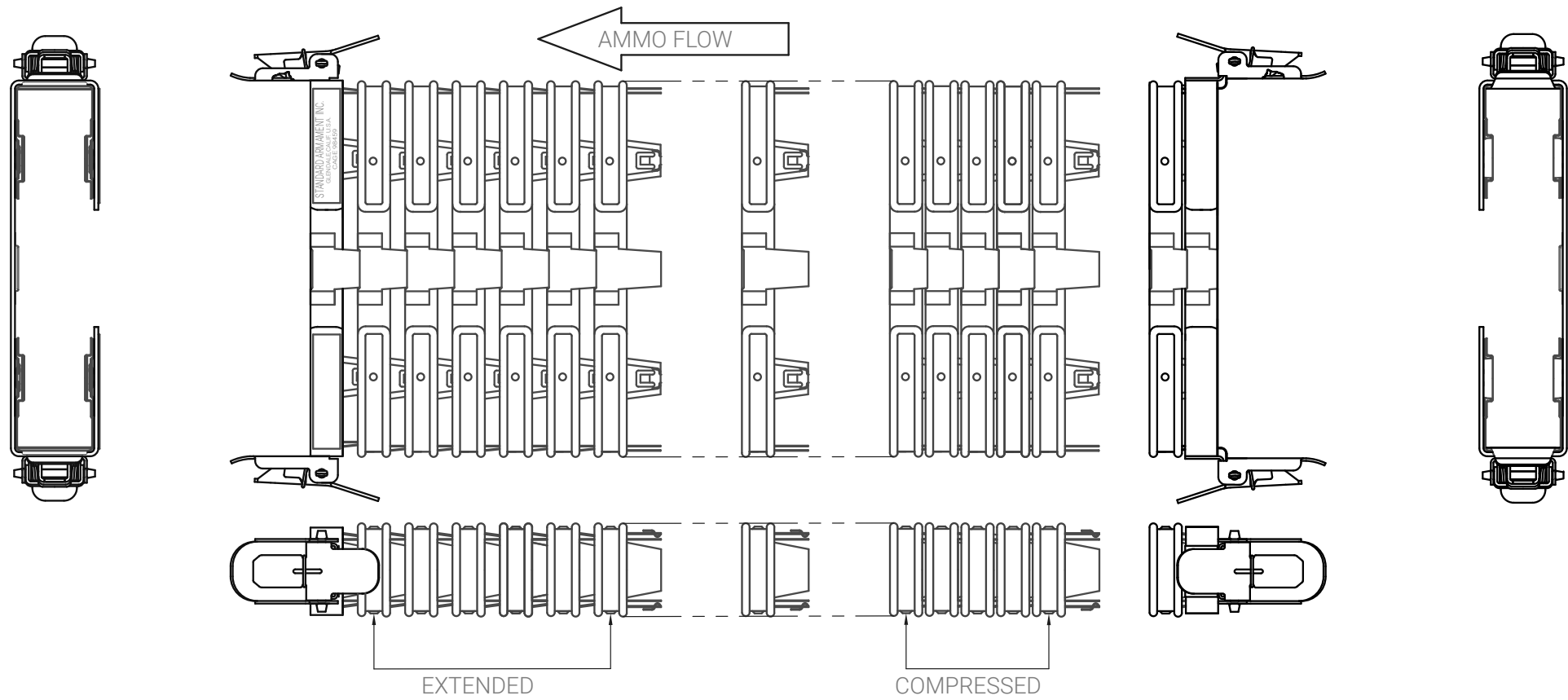





50CAL

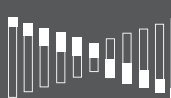


# 50CAL FLEX FEED CHUTE






BEND  
SCALE: NONE



TWIST  
SCALE: NONE



FAN  
SCALE: NONE

## SPECIFICATIONS

NUMBER OF LINKS	PER COMPRESSED FOOT ≈ 22
	PER EXTENDED FOOT ≈ 17
BEND RADIUS ± .25	2 INCHES
FAN RADIUS ± .25	BOTH ENDS 9.5 INCHES
TWIST ± .25	180° IN 24 INCHES

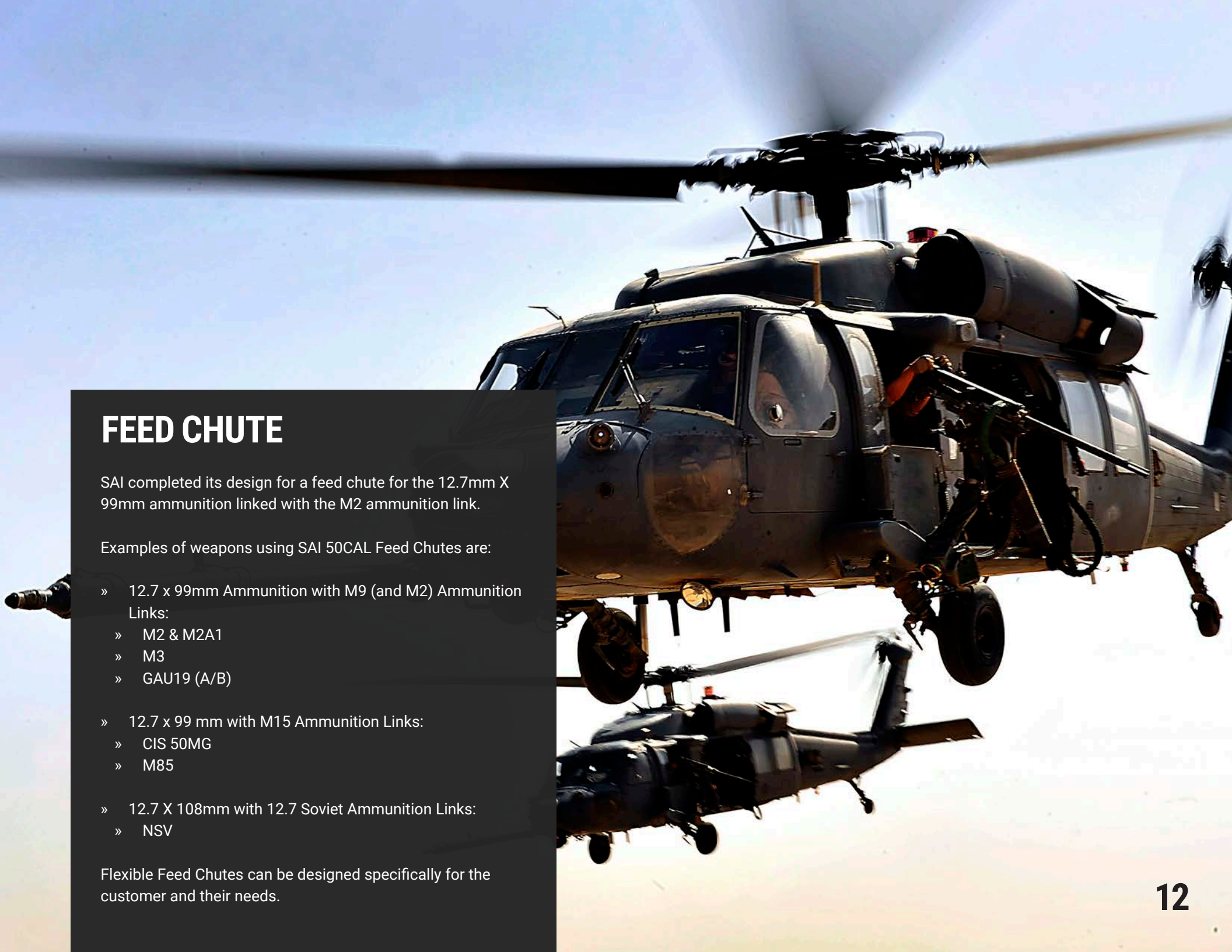
## FEED CHUTE

SAI completed its design for a feed chute for the 12.7mm X 99mm ammunition linked with the M2 ammunition link.

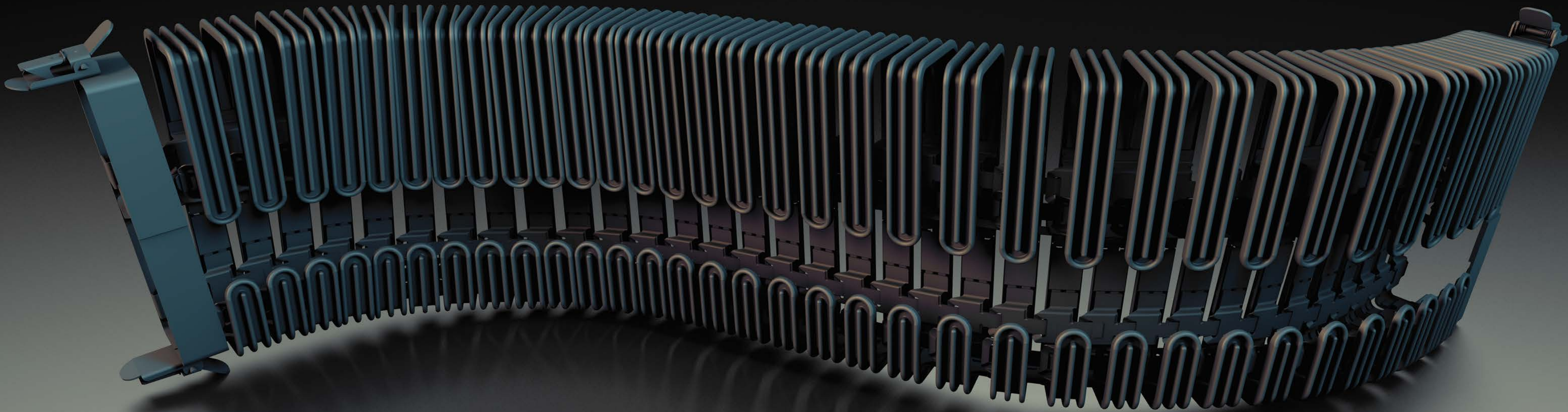
Examples of weapons using SAI 50CAL Feed Chutes are:

- » 12.7 x 99mm Ammunition with M9 (and M2) Ammunition Links:
  - » M2 & M2A1
  - » M3
  - » GAU19 (A/B)
  
- » 12.7 x 99 mm with M15 Ammunition Links:
  - » CIS 50MG
  - » M85
  
- » 12.7 X 108mm with 12.7 Soviet Ammunition Links:
  - » NSV

Flexible Feed Chutes can be designed specifically for the customer and their needs.



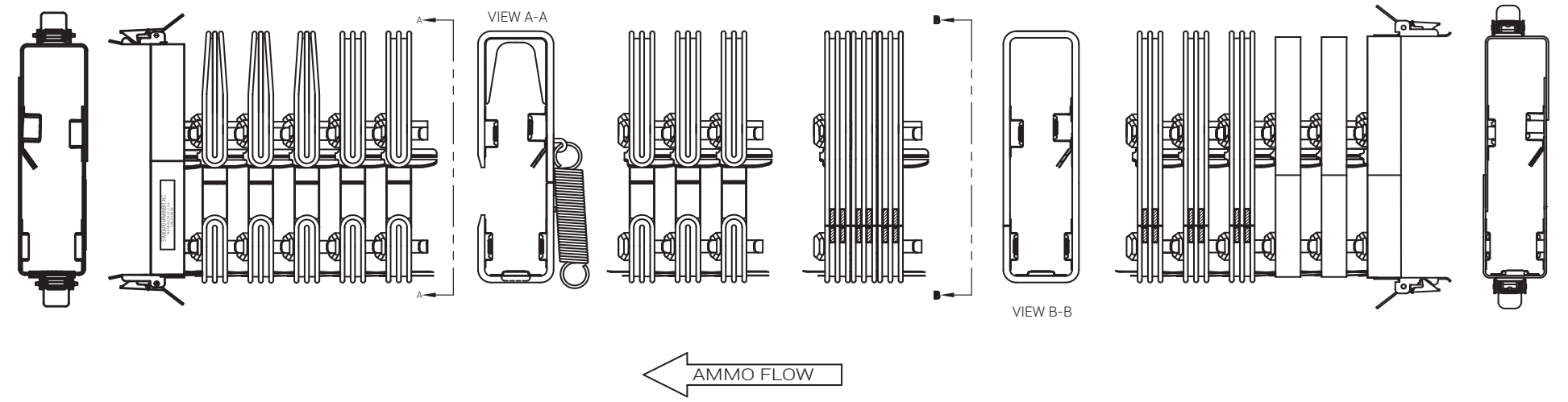




20MM



# 20MM FLEX FEED CHUTE



BEND  
SCALE: NONE

TWIST  
SCALE: NONE

FAN  
SCALE: NONE

## SPECIFICATIONS

NUMBER OF LINKS	PER COMPRESSED FOOT ≈ 16
	PER EXTENDED FOOT ≈ 9
BEND RADIUS ± .25	3.25 INCHES
FAN RADIUS ± .25	BASE END 6.87 INCHES
	NOSE END 7.53 INCHES
TWIST ± .25	180° IN 35.75 INCHES

## FEED CHUTE

» SAI completed its design for a feed chute for the 20mm X 102mm ammunition.

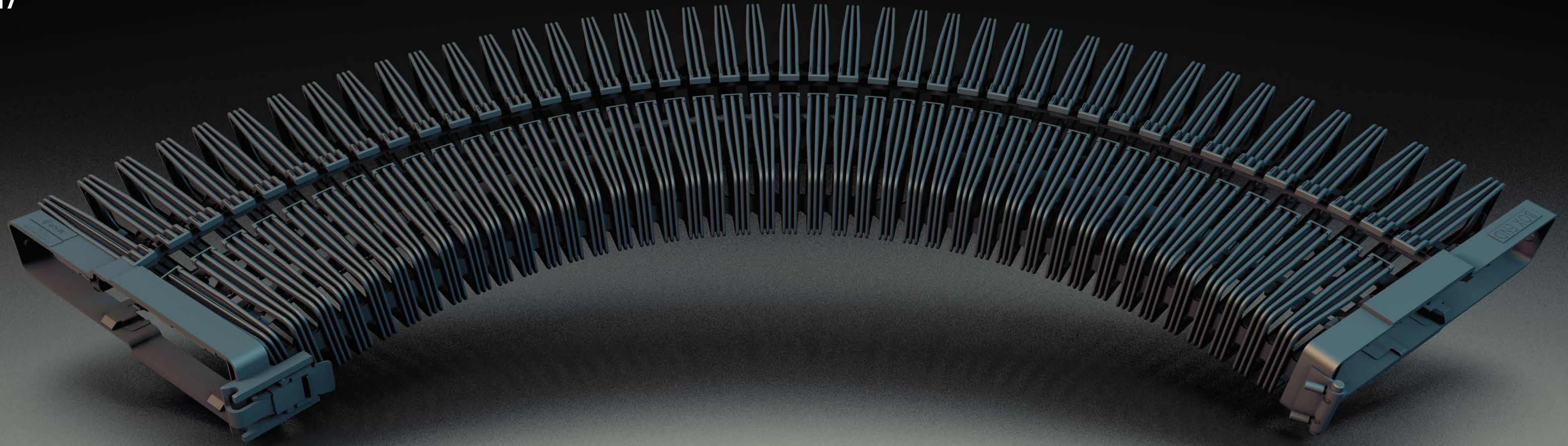
Examples of SAI 20mm Feed Chutes are:

- » 20 X 102mm with M14A2 Or M14A2N link, M197, 3 Barrel Gatling Gun
- » 20 X 102mm linkless, M61A1, 6 Barrel Gatling Gun
- » 20 X 102mm linkless, Flexible Loader Chutes

Flexible Feed Chutes can be designed specifically for the customer and their needs.

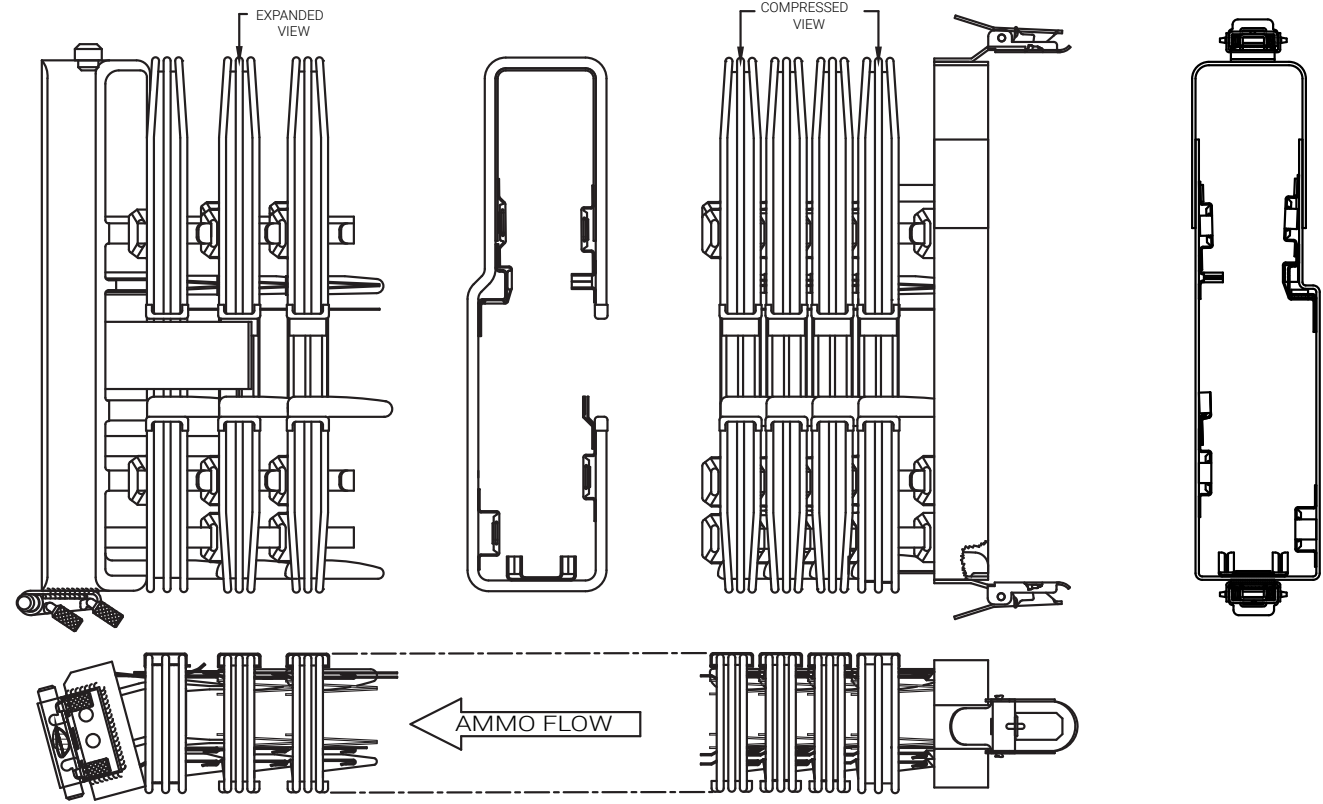
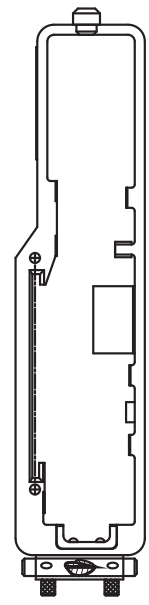






25MM

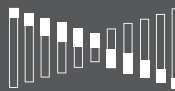




# 25MM FLEX FEED CHUTE



BEND  
SCALE: NONE



TWIST  
SCALE: NONE



FAN  
SCALE: NONE

## SPECIFICATIONS

NUMBER OF LINKS	PER COMPRESSED FOOT ≈ 15
	PER EXTENDED FOOT ≈ 9
BEND RADIUS ± .25	OPEN SIDE 2.5 INCHES
	CLOSED SIDE 3 INCHES
FAN RADIUS ± .25	RIM END 7 INCHES
	PROJECTILE END 7.2 INCHES
TWIST ± .25	180° IN 35.75 INCHES

## FEED CHUTE

SAI completed its design for a feed chute for the 25mm X 137mm ammunition.

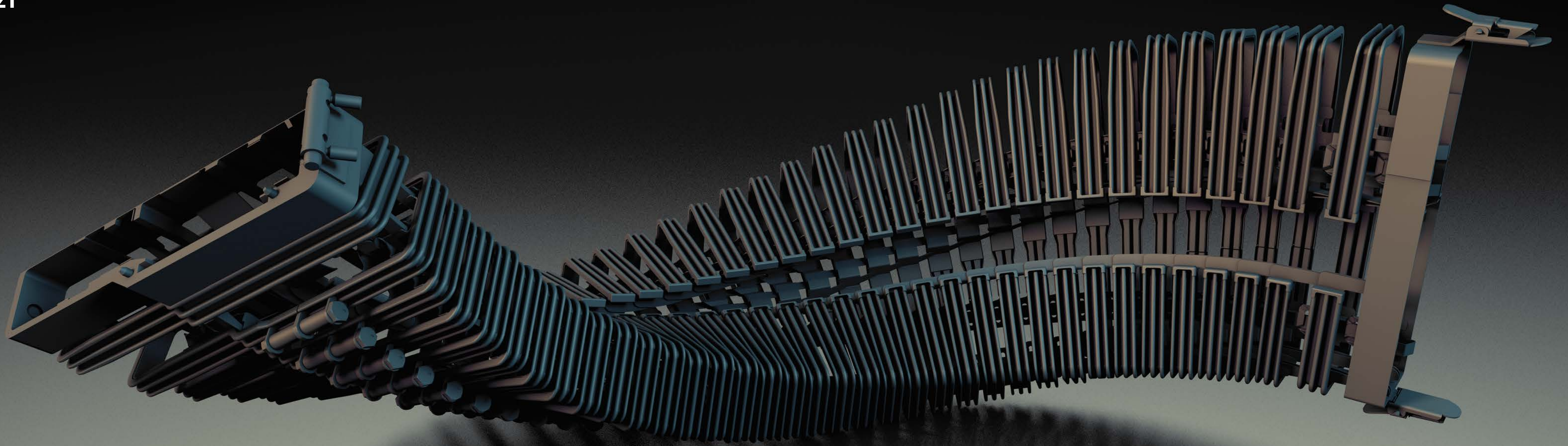
Examples of weapons using SAI 25mm Feed Chutes are:

- » 25 X 137mm Ammunition with M28 Ammunition Link:
  - » ATK M242
  - » Rheinmetall KBA
- » 25 X 137mm Ammunition (linkless):
  - » GAU-12/U
  - » GAU-22/A
- » 25 X 59mm Ammunition linked with ATK Links:
  - » LW25 MM Bushmaster Gun

Flexible Feed Chutes can be designed specifically for the customer and their needs.







30MM



## FEED CHUTE

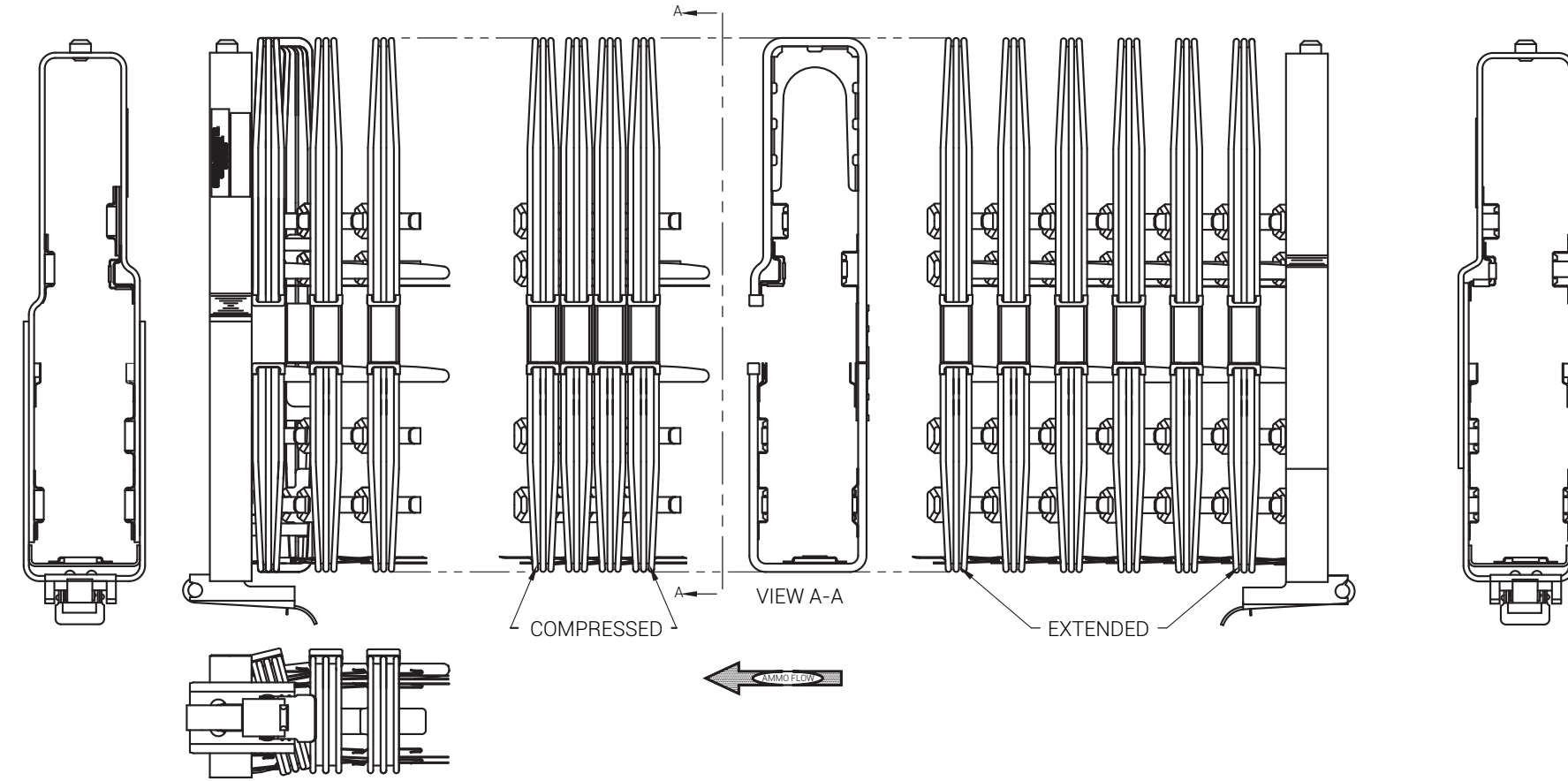
SAI completed its design for a feed chute for the 30mm X 173mm and 30mm X 113mm ammunition.

Examples of weapons using SAI 30mm Feed Chutes are:

- » 30 X 173mm with M15 link, ATK Mk44
- » 30 X 173mm with Mk30-1 link, Rheinmetall (Mauser) Mk30-1
- » 30 X 173mm with DM170 link, Rheinmetall (Mauser) Mk30-2
- » 30 X 173mm linkless, GAU-8
- » 30 X 113mm M230 Linkless
- » 30 X 113mm with M29 link, M230 LF

AH64 Apache & MH60L:

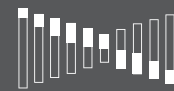
- » 30 X 113mm linkless, M230



## 30MM FLEX FEED CHUTE



BEND SCALE: NONE



TWIST SCALE: NONE

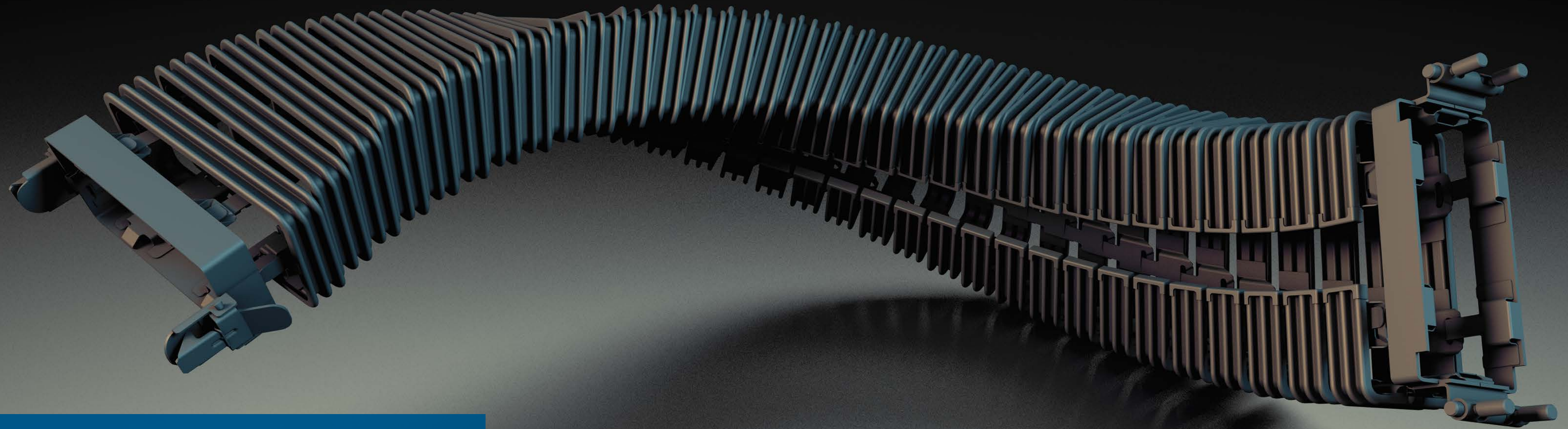


FAN SCALE: NONE

## SPECIFICATIONS

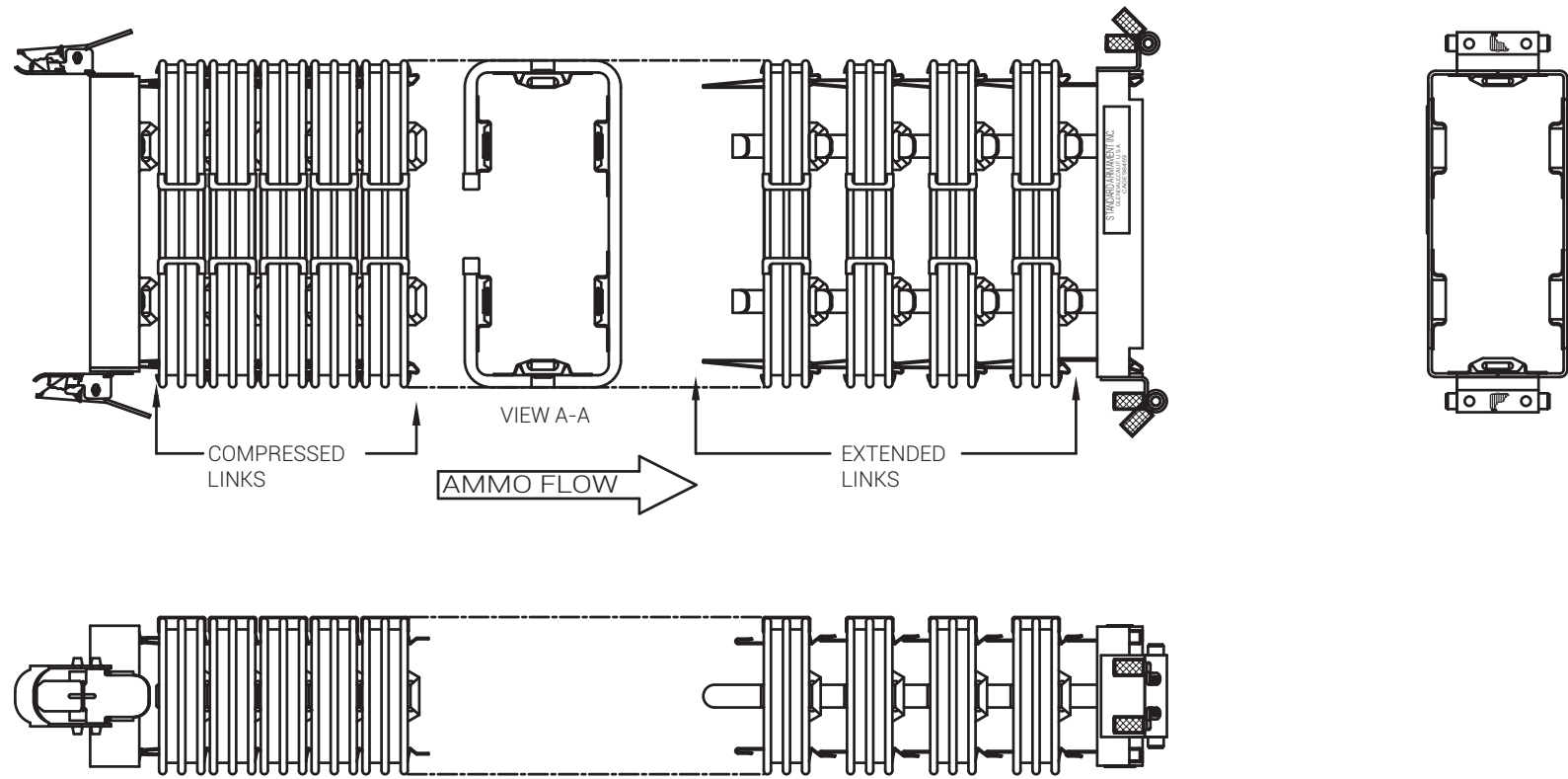
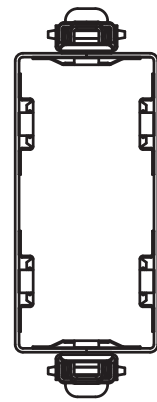
NUMBER OF LINKS	PER COMPRESSED FOOT ≈ 16
	PER EXTENDED FOOT ≈ 9
BEND RADIUS ± .25	3.5 INCHES
FAN RADIUS ± .25	BASE END 10.5 INCHES
	NOSE END 9 INCHES
TWIST ± .25	90° IN 24 INCHES





40MM

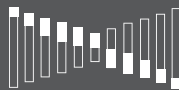




# 40MM FLEX FEED CHUTE



BEND  
SCALE: NONE



TWIST  
SCALE: NONE



FAN  
SCALE: NONE

## SPECIFICATIONS

NUMBER OF LINKS	PER COMPRESSED FOOT ≈ 16
	PER EXTENDED FOOT ≈ 9
BEND RADIUS ± .25	2.28 INCHES
FAN RADIUS ± .25	BOTH ENDS 7.13 INCHES
TWIST ± .25	90° IN 18 INCHES

## FEED CHUTE

SAI completed its design for a feed chute for the 40mm X 53mm ammunition.

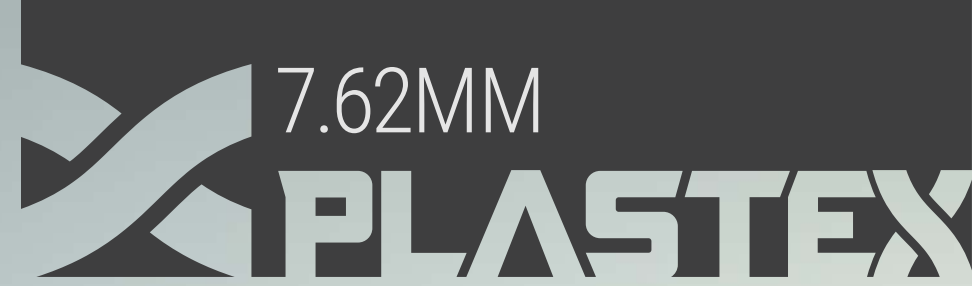
Examples of SAI 20mm Feed Chutes are:

- » Mk 19
- » CIS 40 AGL
- » HK GMG

Flexible Feed Chutes can be designed specifically for the customer and their needs.







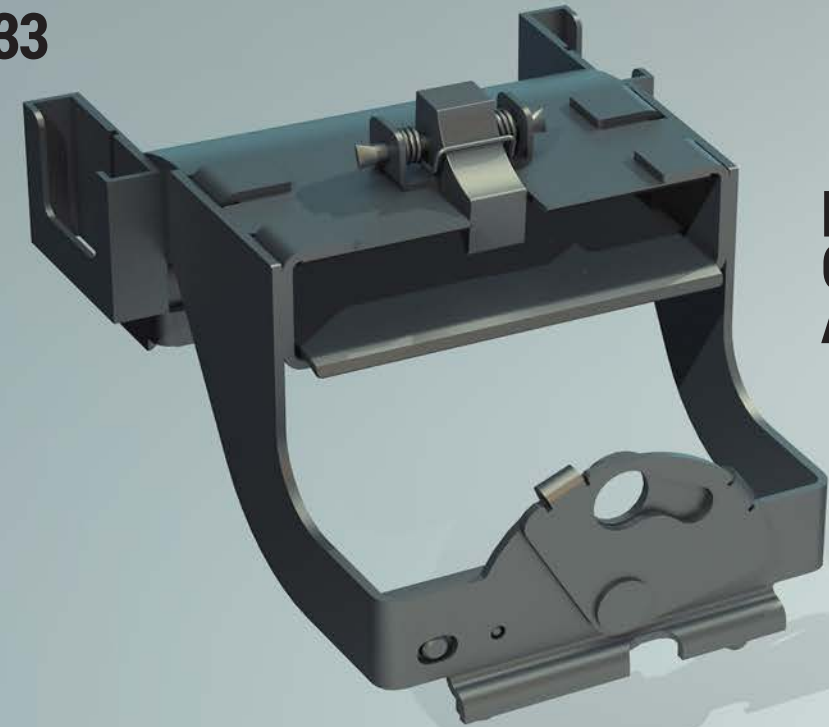
**7.62MM  
FLEX  
FEED  
CHUTE**



## FEED CHUTE

- » **PLASTEX** is made from high strength composite materials for an extended life.
- » **PLASTEX** chuting allows for high optimization of flexibility and weight reduction techniques.
- » **PLASTEX** designed links have corrosion resistant coated stainless steel inner components.
- » **PLASTEX** 50CAL chute is designed for the NATO 12.7mm X 99mm

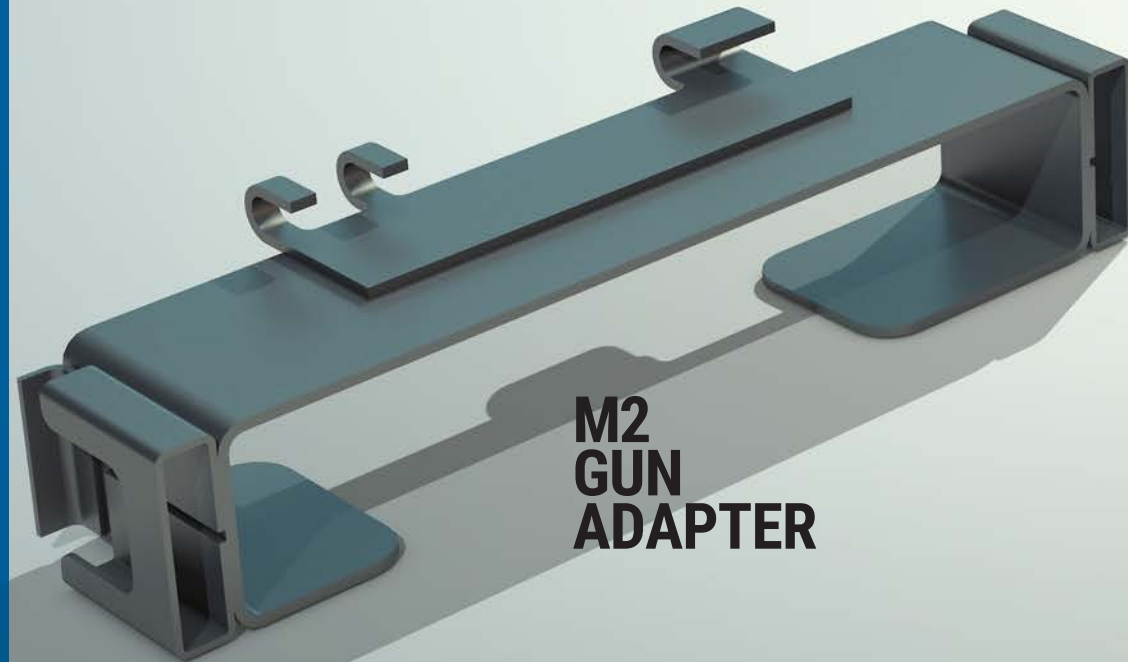




**M240  
GUN  
ADAPTER**



**MK48  
GUN  
ADAPTER**



**M2  
GUN  
ADAPTER**

## GUN APAPTERS

Feed Adapters connect to the weapon and provide mounting points for the feed chute. Feed Adapters can also be incorporated into the feed chute to eliminate separate pieces.

Currently feed adapters are available for:

- » M60
- » MAG58
- » M240
- » FN's Mk46 / MK48
- » M2 / M3

Gun Adapters can be designed specifically for the customer and their needs.

## AMMO BOX

SAI has designed and fabricated custom ammunition boxes for multiple ammunitions. SAI's ammo boxes are fabricated from stainless steel and are tailored to the customers design requirements.



**50CAL  
AMMO  
BOX**



**7.62MM  
AMMO  
BOX**



# CHUTE OPTIONS

## Coatings

Standard Armament's standard coating is a Solid Film Lubricant per MIL-PRF-46010.

Optional Advanced Coatings:

- » Electroless Nickel-Teflon PTFE
- » Cerakote

## Pawl Assemblies

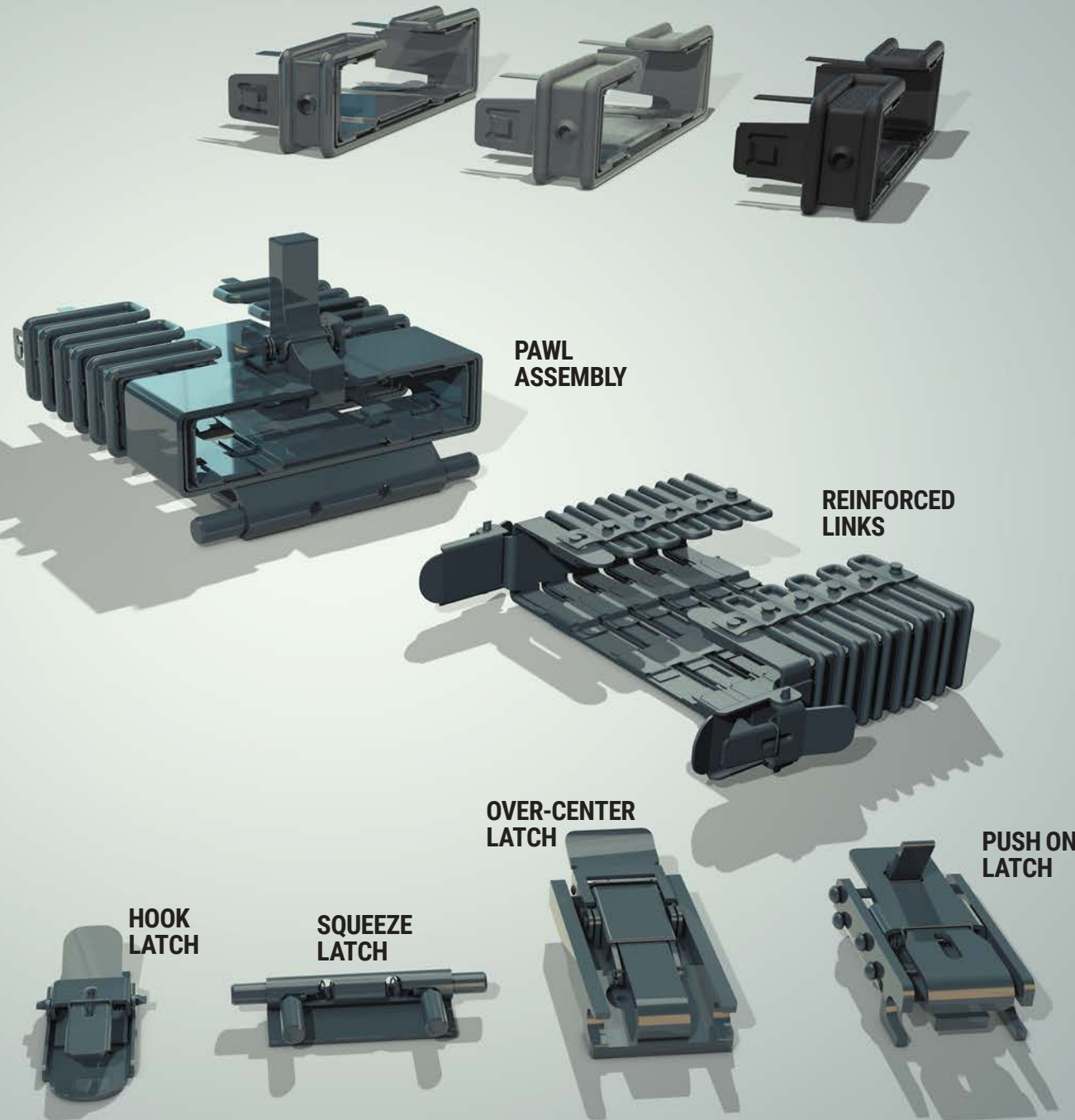
When the ammunition box is located below the height of the weapon, the ammunition will often download when the receiver is opened. Standard Armament can integrate a ratcheting device (Pawl Assembly) to fix that

## Reinforced Links

Standard Armaments small caliber chutes have optional reinforced links for specific customer installations where higher levels of stress are needed. One main application is when timing differences between the gun and booster motor result in a buildup of ammo in the chute.

## Latch Styles

- » Hook Latch
- » Squeeze Latch
- » Over-Center Latch
- » Push On Latch



# ABOUT US

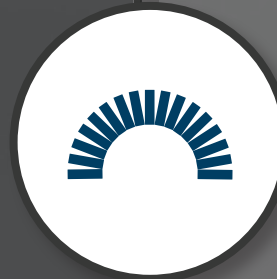
## HISTORY

Curtis V. Correll Sr., the founder of the company, was part of a new division of Hughes Aircraft. It was the Armament Division, and there were six engineers. The aircraft being designed at the time had a tail gunner area that was very tight and had very little room. The ammunition could not be connected to the gun. The Armament division designed a chute to solve the problem of carrying the ammo safely through to the gun.

Mr. Correll took his idea to a company named National Armament. They agreed to make all the tooling. Eventually, National Armament fell upon hard times and had to shut down the Armament division. Mr. Correll then started to produce the ammo chute from his garage at his home for a period of time.

Mr. Correll and three other men then ended up deciding to form their own company. The new company was known as Standard Armament Inc.

Standard Armament Inc. remains a family owned and operated company located in Glendale California.



Bend is the characteristic of the flexible chute to flex around the long side of the chute where the side of the round or link rides. Bend allows for a smooth path in tight space gun and ammunition box connections



Twist is the characteristic of the flexible chute to rotate along its central axis 180 degrees in the most minimal distance. Twist allows for the extreme positive and negative gun elevations.



Fan is the characteristic of the flexible chute to flex around the short side of the chute where the base of the round rides. Fan allows for offset gun and ammunition box configurations to control the ammunition flow.





# CONTACT US

[www.standardarmament.com](http://www.standardarmament.com)

glendale. california. usa  
818•842•6144

