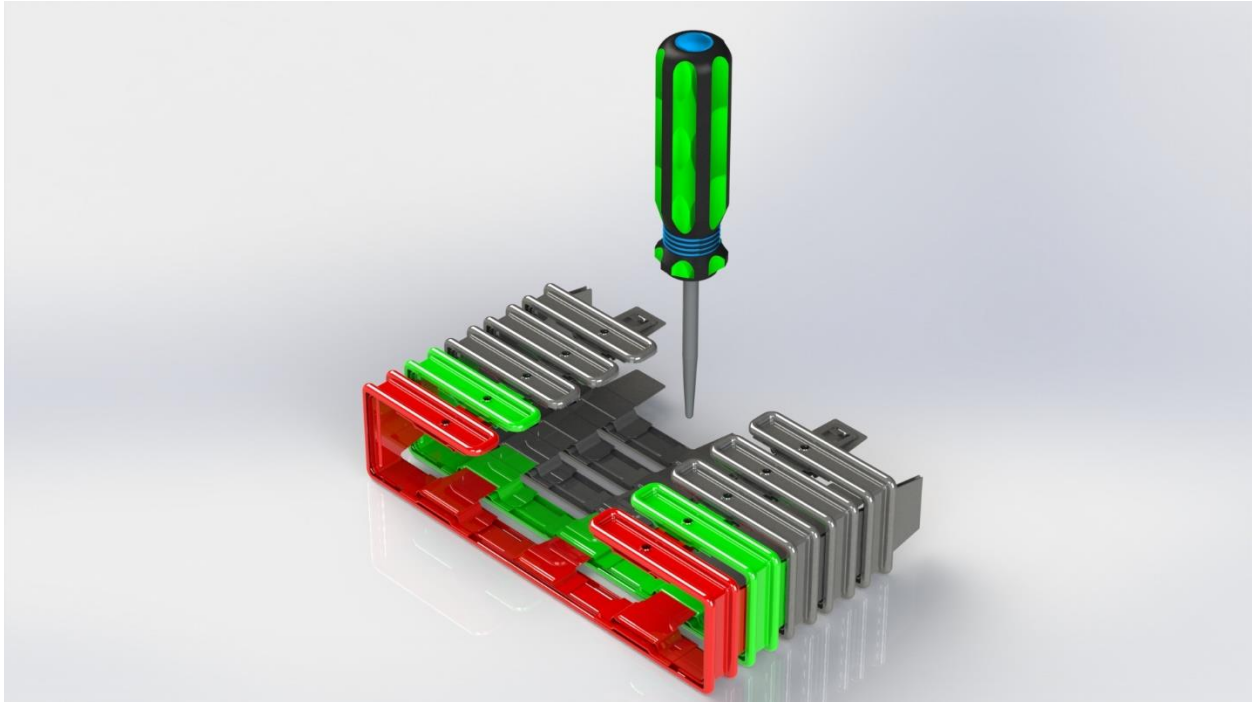


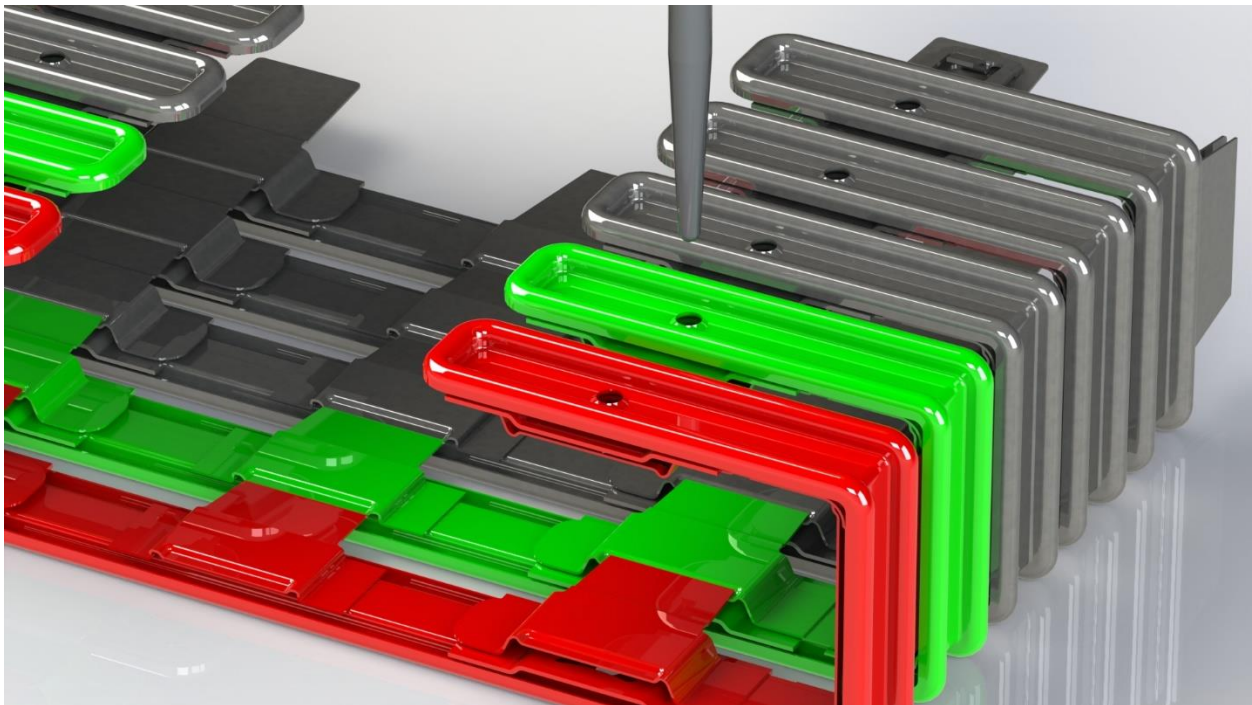
12.7MM Disassembly – Assembly Instructions

Disassembly

Step 1 – Find a tool/awl with a pointed edge that will fit in the hole of the link.

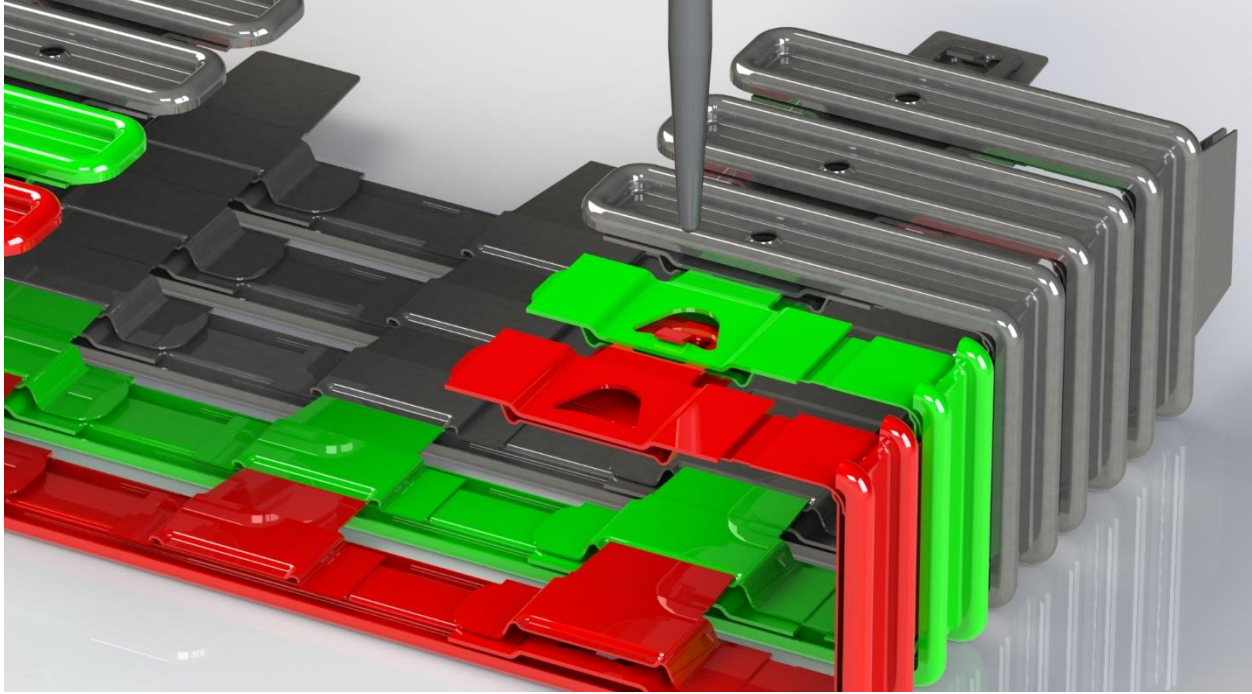


Step 2 – Align the tool/awl point with the hole in the link.

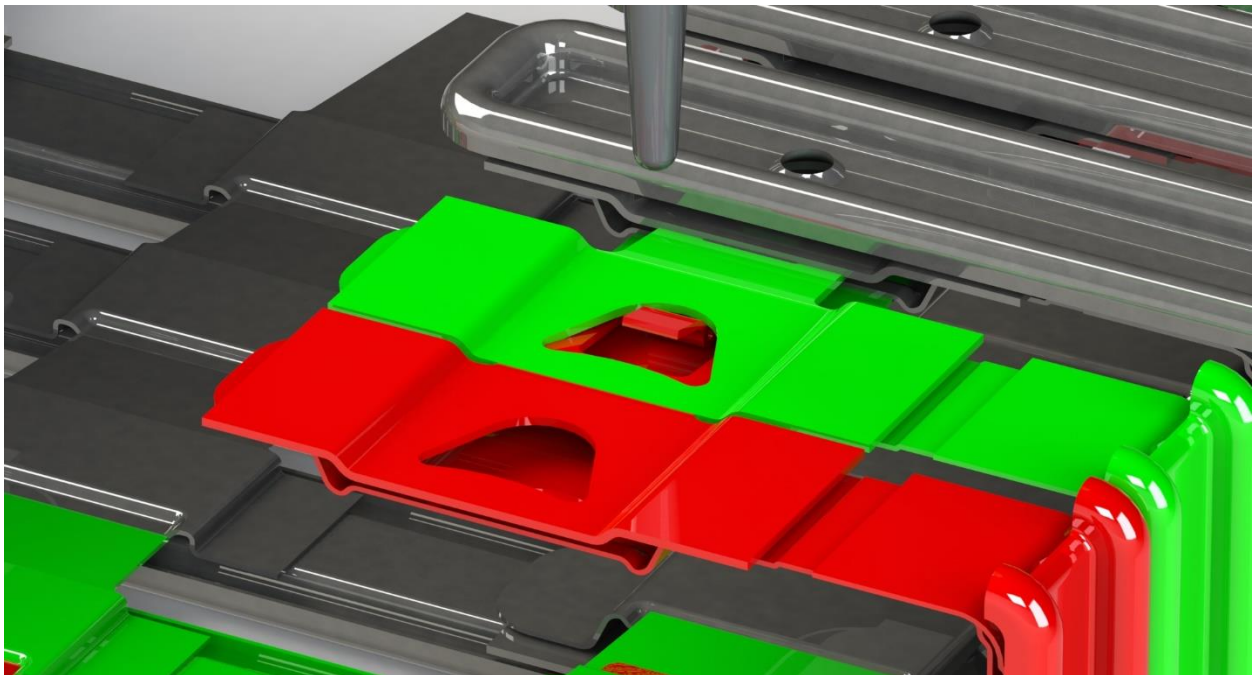


12.7MM Disassembly – Assembly Instructions

Cut View – This is an inside view of two links that have not been pressed together. Notice the connector does not clear the connector opening it is assembled in.

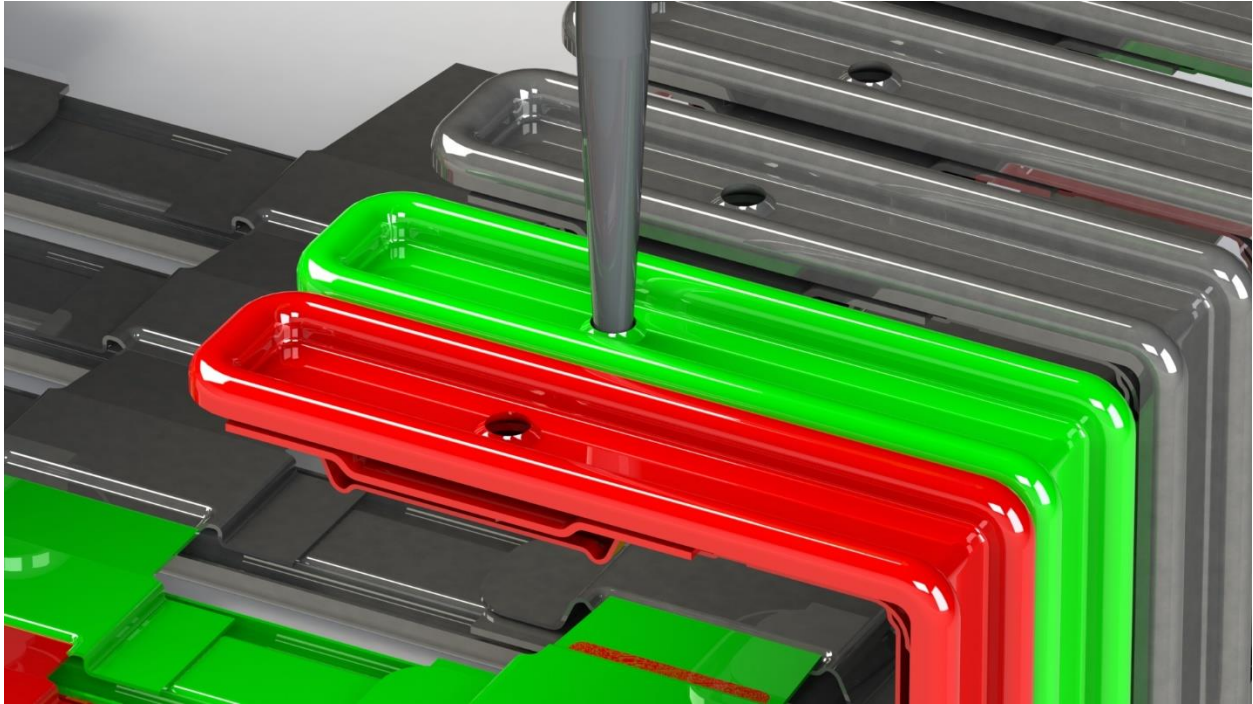


Step 3 – Press the two links together to align the connector tip with the hole. Notice the connector clip clears the connector opening it is pushed in.

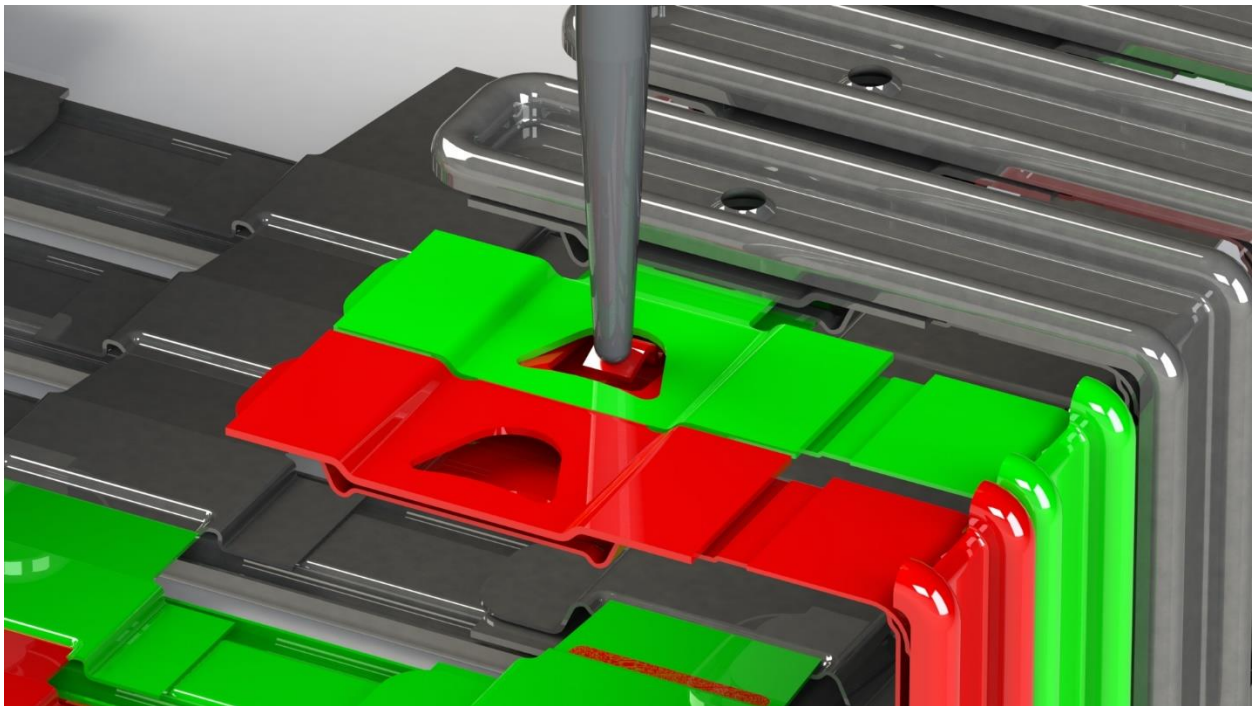


12.7MM Disassembly – Assembly Instructions

Step 3 – Now that the links are pressed together insert the tool in the hole of the link you want to disassemble.

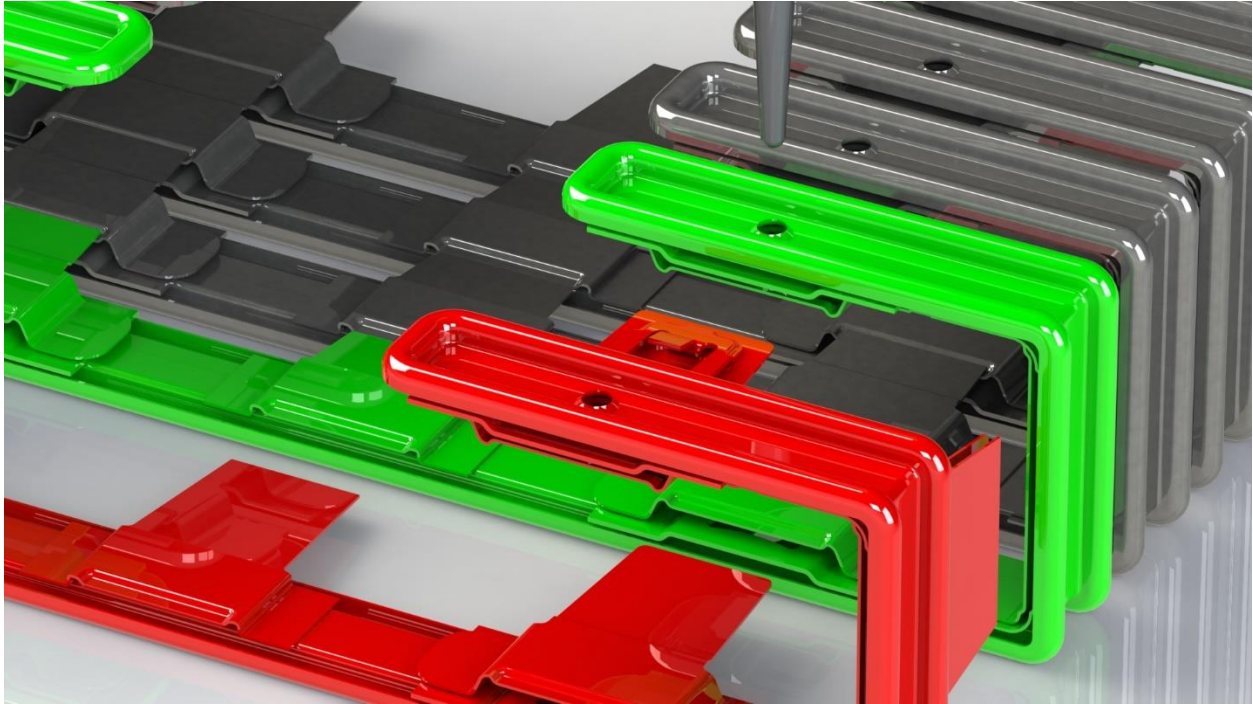


Cut View – This is an inside view of the clip connector being pushed down so it may pass by the connector it was originally assembled.

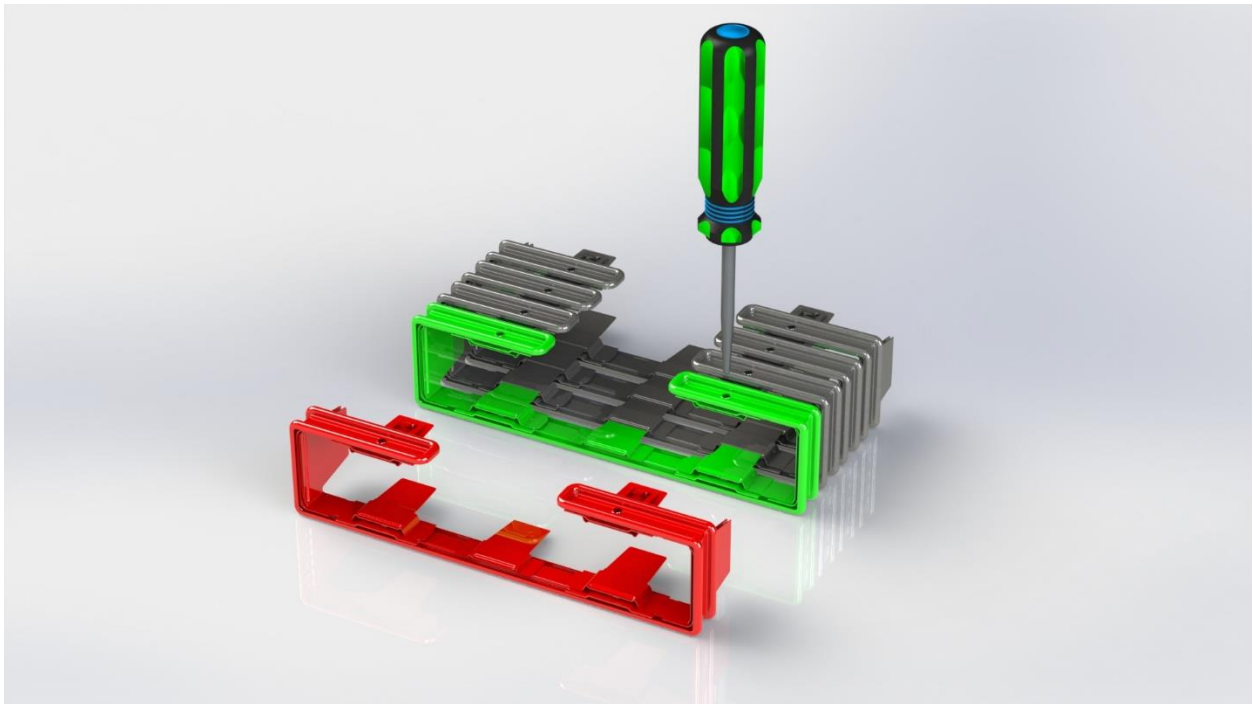


12.7MM Disassembly – Assembly Instructions

Step 5 – While the tool is pressed against the connector slide the link out. Note a flathead screwdriver may be used to help separate the two links.



Step 6 – Repeat steps 1-5 on the other 3 connectors and the link will be disassembled.



12.7MM Disassembly – Assembly Instructions

Assembly

Step 1 – To Assemble links together insert liners/connectors #1-7 in their mating gaps of the link being connected to. Push the links together until all 4 connectors have snapped into place. Verify that all liners/connectors are in place and not sticking out. Note that there are alternate versions of the 12.7MM link that might have an alternate amount of connectors/liners. See the other connected links as an example.

